

(n)Code Applet-less PKI component Help Document

Applet-less PKI component Help document

Contents

Prerequisite.....	2
Steps to install the setup.	3
Steps to uninstall / re-install	5
Import security certificate (if you are not able to use applet less PKI component)	6
Debugging Applet-less PKI component.....	11

Applet-less PKI component Help document

Prerequisite

- Java 1.8
- **Local system administrator rights** are required.
 - Note: Do **not** use the "**Run as Administrator**" option.
 - The installation process should not prompt for any username or password.
- Token drivers must be installed on the system.

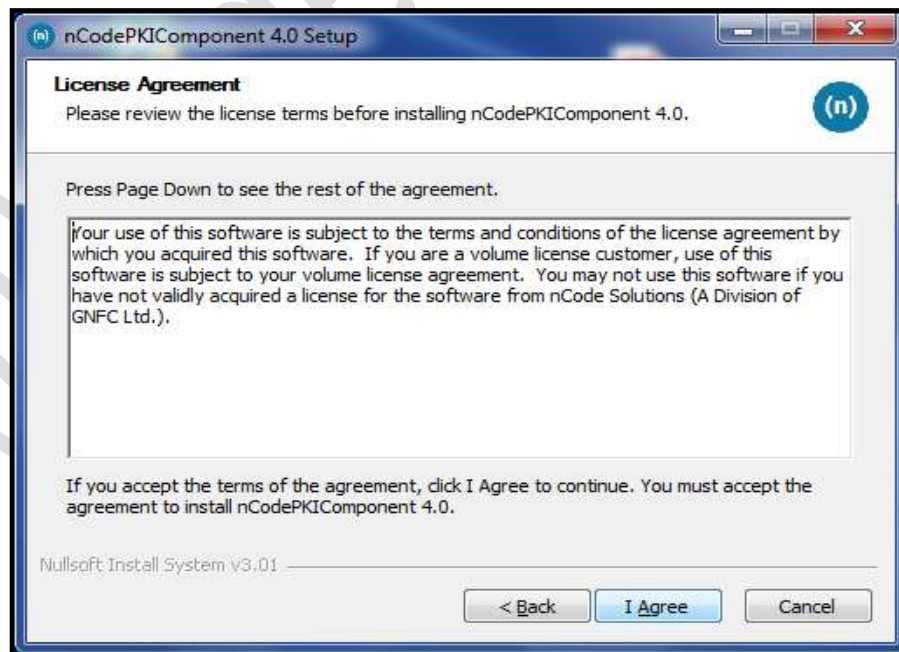
Applet-less PKI component Help document

Steps to install the setup.

- Click on the 'nCodePKIComponent' setup. A popup will appear as shown below.



- Click on next, Agree on terms and condition.

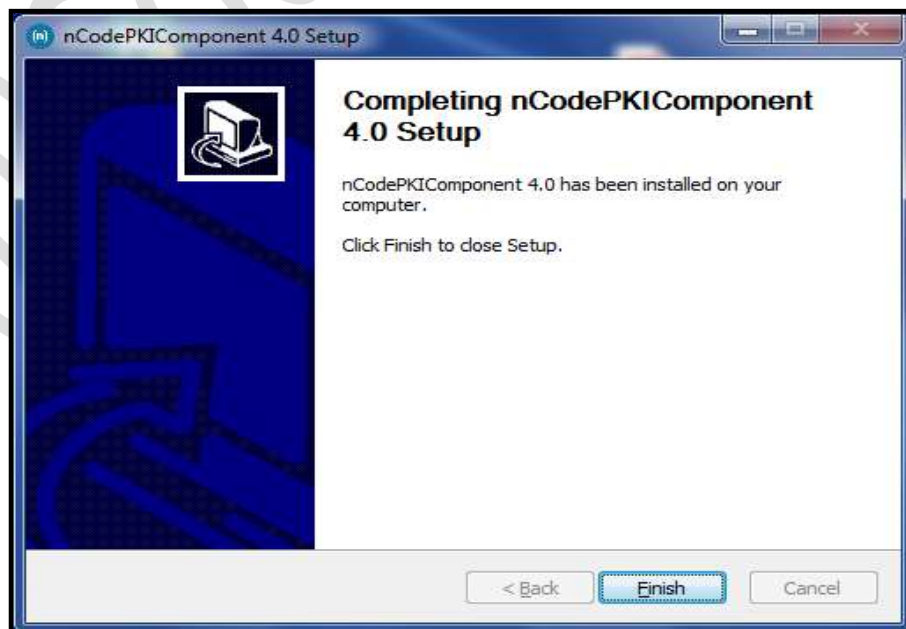


Applet-less PKI component Help document

- If a prompt appears during the installation process, click '**Yes**' to proceed.

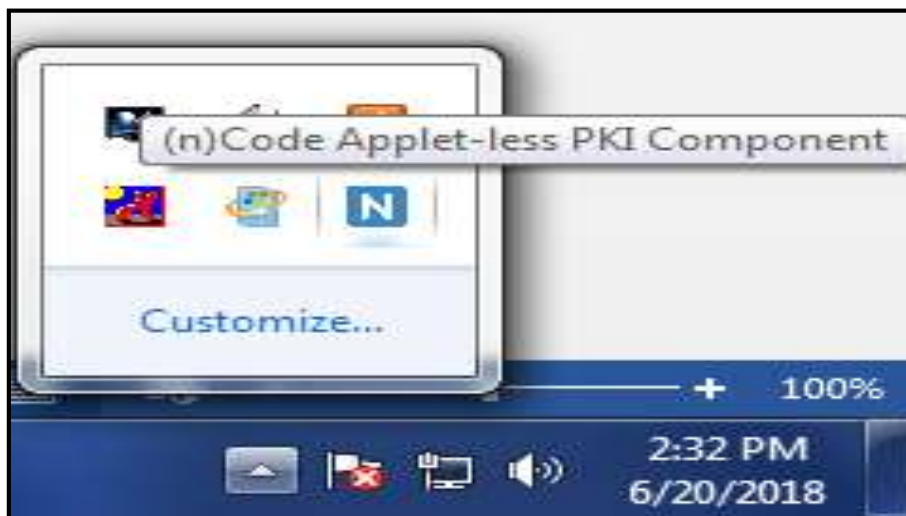


- Click 'Finish' to complete the installation.



Applet-less PKI component Help document

- After clicking the 'Finish' button, the Applet-less PKI component will run automatically, and its icon will appear in the system tray



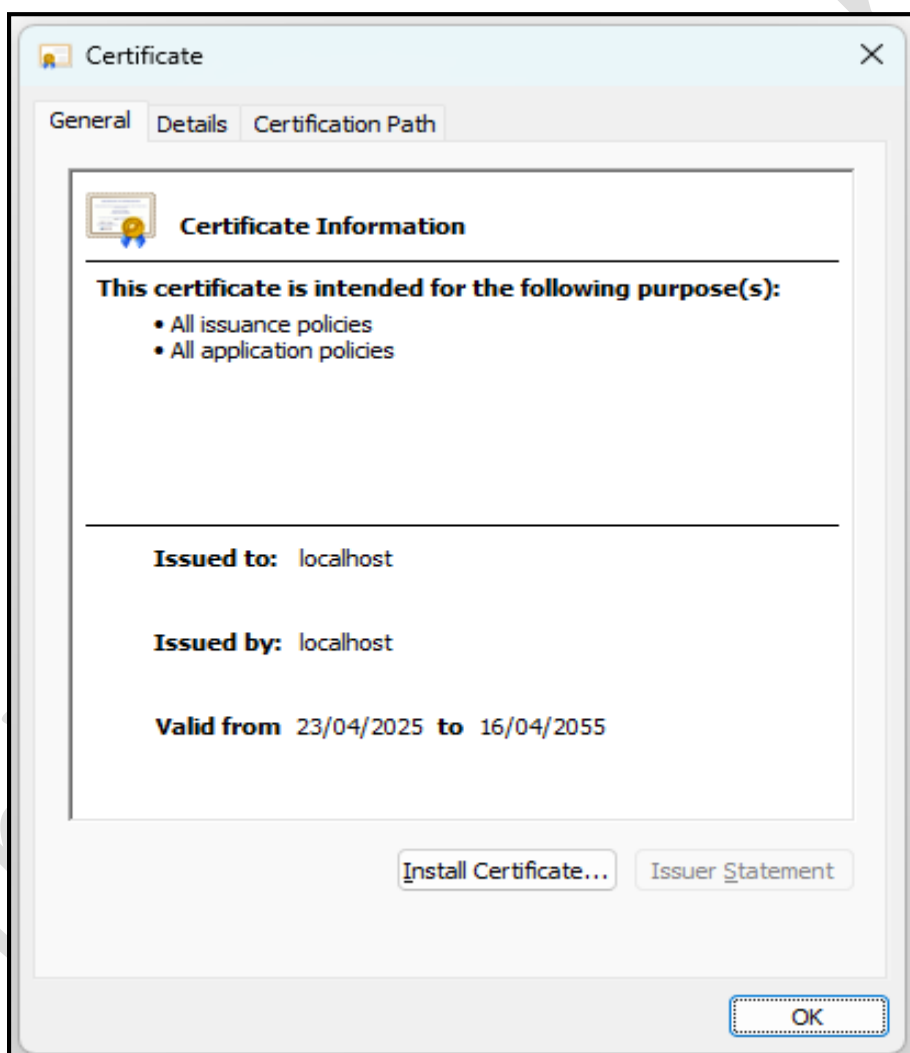
Steps to uninstall / re-install

- Go to Control Panel > Add or Remove Programs (or Programs and Features).
- Search for **nCodePKIComponent V4.0** in the list.
- Right-click on **nCodePKIComponent V4.0** and select Uninstall/Change. This will launch the uninstallation wizard. Follow wizard to uninstall **nCodePKIComponent V4.0**
- Follow the wizard steps to complete the uninstallation process.
- Reinstall **nCodePKIComponent V4.0** by running the setup file.

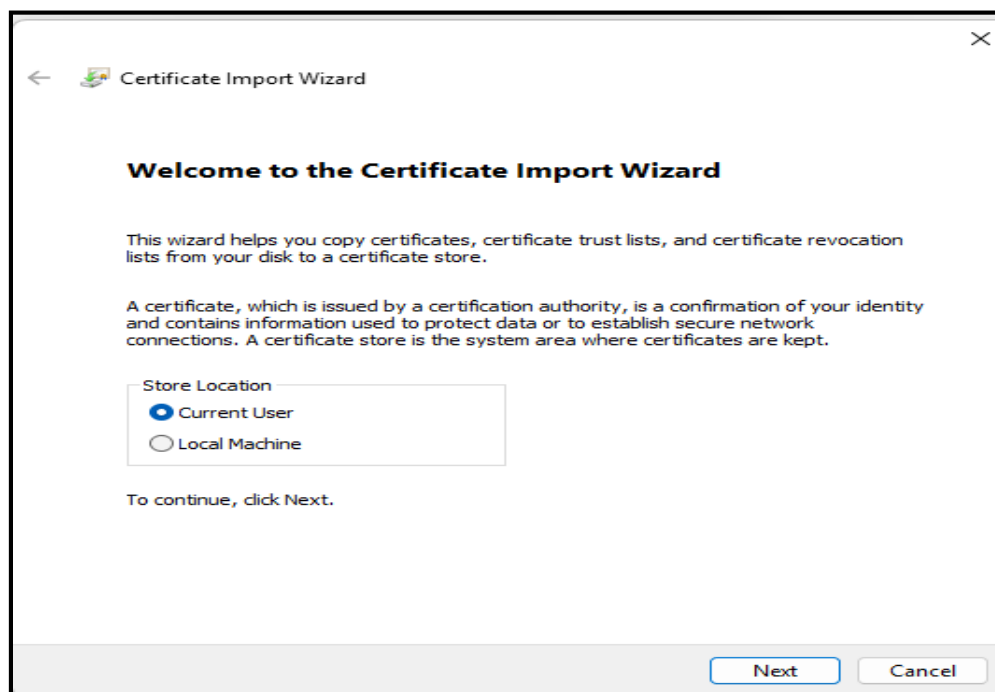
Applet-less PKI component Help document

Import security certificate (if you are not able to use applet less PKI component)

- Download the localhost.crt file provided with this help document. Localhost.crt file
- **Download link:** <http://103.20.104.57:8080/Download/JAVA/localhost2025.crt>
- Close all browsers open in the system.
- Double click on downloaded file "localhost2025.crt"
 - Click on install certificate



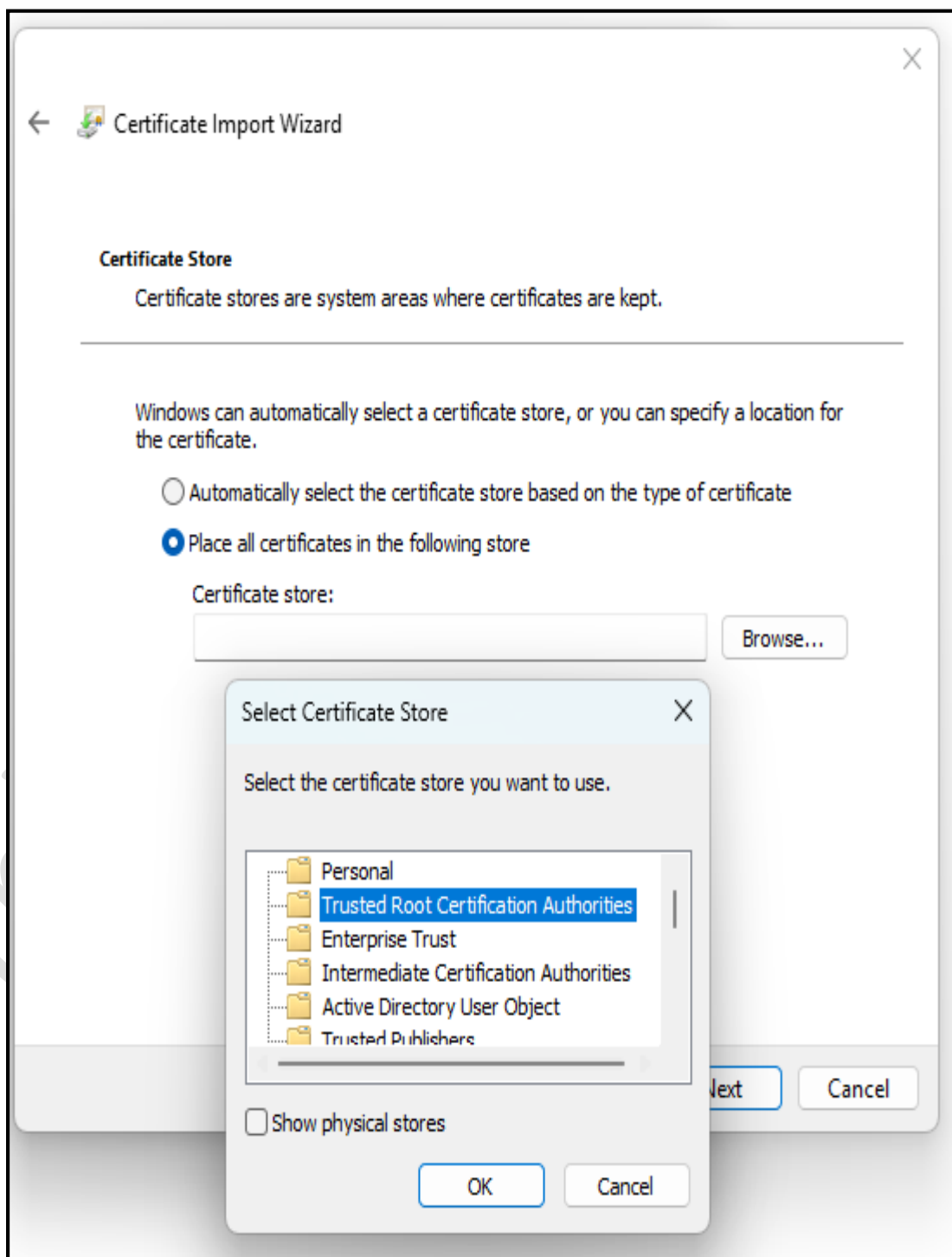
Applet-less PKI component Help document



- Click next

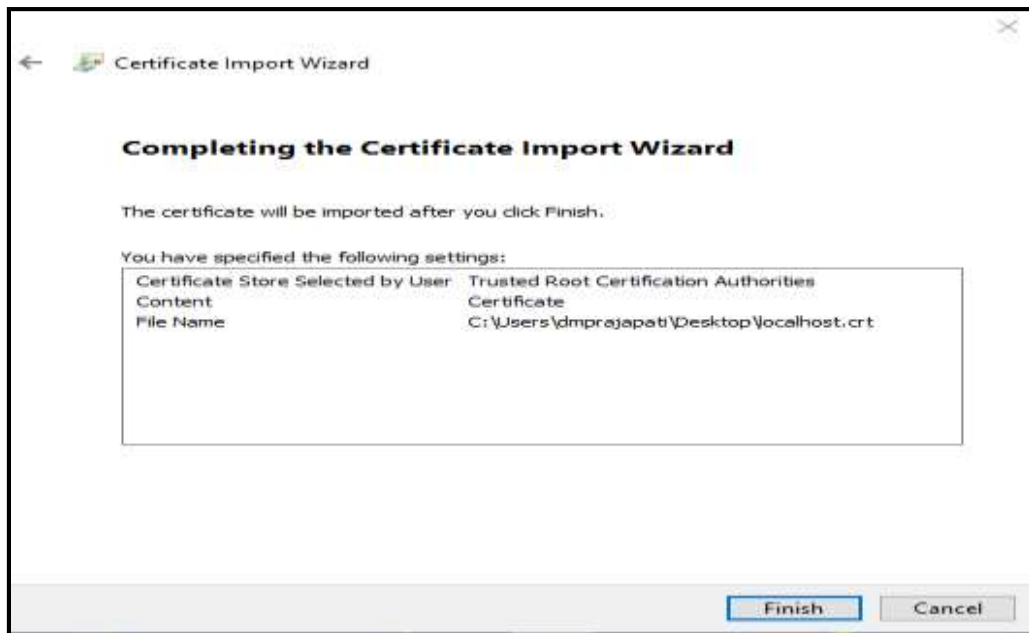
Applet-less PKI component Help document

- Select **“Place all certificates in the following store”**, then click **Browse**. A new window will open.
- In the new window, select **“Trusted Root Certification Authorities”** and click **OK** to close the window.
- Click **Next**, then click **Finish** to complete the certificate installation wizard.

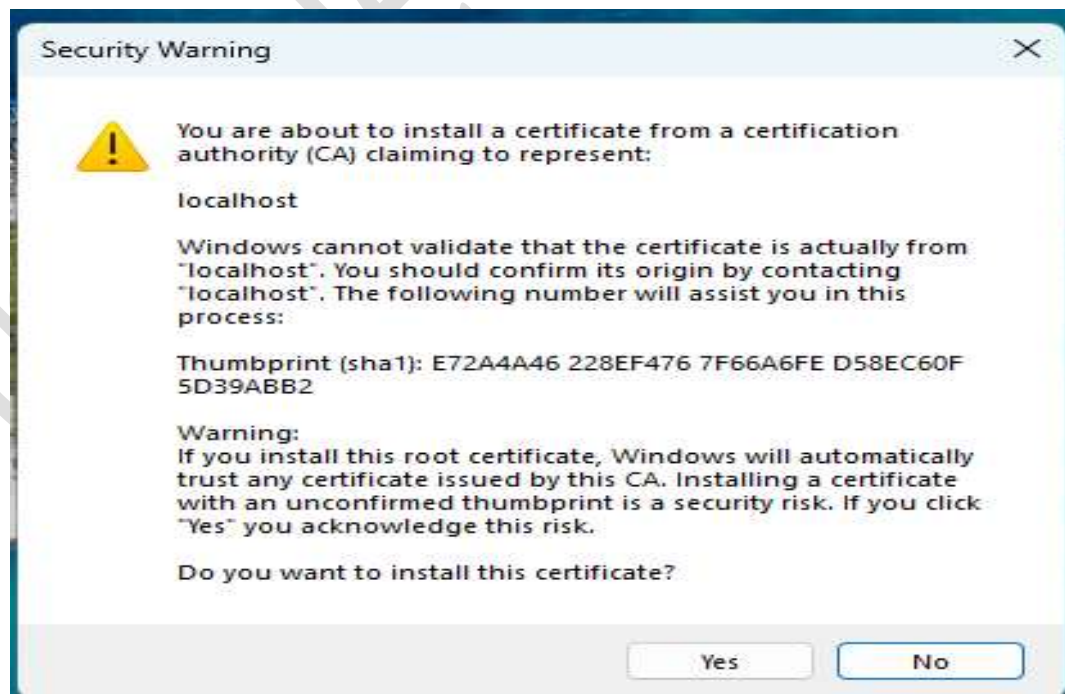


Applet-less PKI component Help document

- Click Next to continue



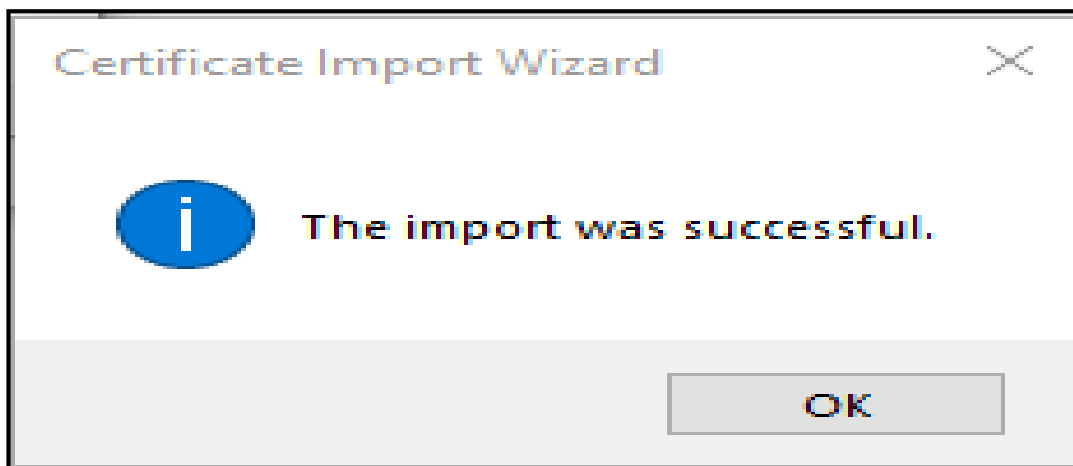
- You will get one more dialog box as show below
 - Click on Yes



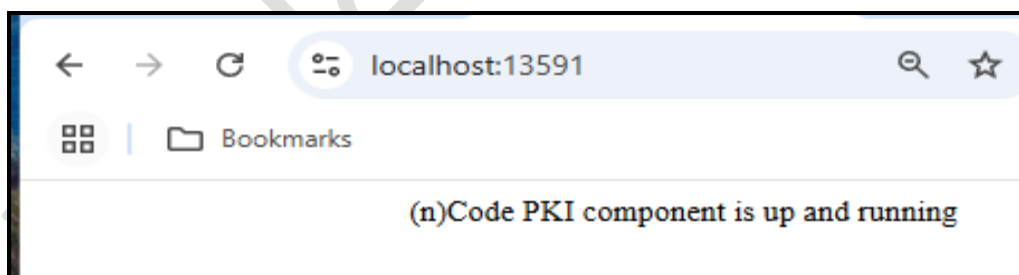
- Then click on Finish

Applet-less PKI component Help document

- After that you will get message “The import was successful”



- Close all open windows
- Open Chrome web browser
 - Try to access the following URL <https://localhost:13591/>
 - **If you are getting the following message changes are applied successfully.**



Applet-less PKI component Help document

Debugging Applet-less PKI component

- Go to the PKI component installation folder :
 - For 64-bit system
 - Close already running PKI component from the system tray (near system date & time)
 - C:\Program Files\nCodePKIComponent\
 - Search for **run_64.bat** file
 - Double click on **run_64.bat**
 - it will open a command prompt and PKI component in debug mode
 - For 32-bit system
 - Close already running PKI component from the system tray (near system date & time)
 - C:\Program Files\nCodePKIComponent\
 - Search for **run_32.bat** file
 - Double click on **run_32.bat**
 - it will open a command prompt and PKI component in debug mode
- You will see the PKI component logs in the command prompt
 - Copy-paste command prompt content in a text file and send it to us.
 - Note : do not share screen shot of command prompt