

# Appletless PKI Component Help Document

## Contents

- Prerequisite ..... 2
- Steps to install Java ..... 2
- Steps to install the setup. .... 3
- Steps to uninstall..... 5

# Appletless PKI Component Help Document

## Prerequisite

- Java 1.8 32 bit or above( jre-8u171-windows-i586.exe)
- Local system admin rights
  - Note: do not run as “run as administrator”.

## Steps to install Java 1.8 32 bit.

- To download java go to link <http://www.oracle.com/technetwork/es/java/javase/downloads/jre8-downloads-2133155.html?printOnly=1>
- Accept license Agreement and Download jre-8u171-windows-i586.exe

Java SE Runtime Environment 8u171		
You must accept the <a href="#">Oracle Binary Code License Agreement for Java SE</a> to download this software.		
<input checked="" type="radio"/> Accept License Agreement <input type="radio"/> Decline License Agreement		
Product / File Description	File Size	Download
Linux x86	64.47 MB	<a href="#">jre-8u171-linux-i586.rpm</a>
Linux x86	80.38 MB	<a href="#">jre-8u171-linux-i586.tar.gz</a>
Linux x64	61.43 MB	<a href="#">jre-8u171-linux-x64.rpm</a>
Linux x64	77.41 MB	<a href="#">jre-8u171-linux-x64.tar.gz</a>
Mac OS X x64	74.58 MB	<a href="#">jre-8u171-macosx-x64.dmg</a>
Mac OS X x64	66.21 MB	<a href="#">jre-8u171-macosx-x64.tar.gz</a>
Solaris SPARC 64-bit	52.13 MB	<a href="#">jre-8u171-solaris-sparcv9.tar.gz</a>
Solaris x64	50.03 MB	<a href="#">jre-8u171-solaris-x64.tar.gz</a>
Windows x86 Online	1.79 MB	<a href="#">jre-8u171-windows-i586-iftw.exe</a>
Windows x86 Offline	61.66 MB	<a href="#">jre-8u171-windows-i586.exe</a>
Windows x86	64.84 MB	<a href="#">jre-8u171-windows-i586.tar.gz</a>
Windows x64	68.5 MB	<a href="#">jre-8u171-windows-x64.exe</a>
Windows x64	68.92 MB	<a href="#">jre-8u171-windows-x64.tar.gz</a>

Java SE Runtime Environment 8u172		
You must accept the <a href="#">Oracle Binary Code License Agreement for Java SE</a> to download this software.		
<input type="radio"/> Accept License Agreement <input checked="" type="radio"/> Decline License Agreement		
Product / File Description	File Size	Download
Linux x86	64.49 MB	<a href="#">jre-8u172-linux-i586.rpm</a>
Linux x86	80.4 MB	<a href="#">jre-8u172-linux-i586.tar.gz</a>
Linux x64	61.44 MB	<a href="#">jre-8u172-linux-x64.rpm</a>
Linux x64	77.42 MB	<a href="#">jre-8u172-linux-x64.tar.gz</a>
Mac OS X x64	74.61 MB	<a href="#">jre-8u172-macosx-x64.dmg</a>
Mac OS X x64	66.22 MB	<a href="#">jre-8u172-macosx-x64.tar.gz</a>
Solaris SPARC 64-bit	52.29 MB	<a href="#">jre-8u172-solaris-sparcv9.tar.gz</a>
Solaris x64	50.04 MB	<a href="#">jre-8u172-solaris-x64.tar.gz</a>
Windows x86 Online	1.79 MB	<a href="#">jre-8u172-windows-i586-iftw.exe</a>
Windows x86 Offline	61.68 MB	<a href="#">jre-8u172-windows-i586.exe</a>
Windows x86	64.85 MB	<a href="#">jre-8u172-windows-i586.tar.gz</a>
Windows x64	68.54 MB	<a href="#">jre-8u172-windows-x64.exe</a>
Windows x64	68.94 MB	<a href="#">jre-8u172-windows-x64.tar.gz</a>

## Steps to install nCodePKIComponent setup.

- Click on nCodePKIComponent setup, popup will be shown as below.

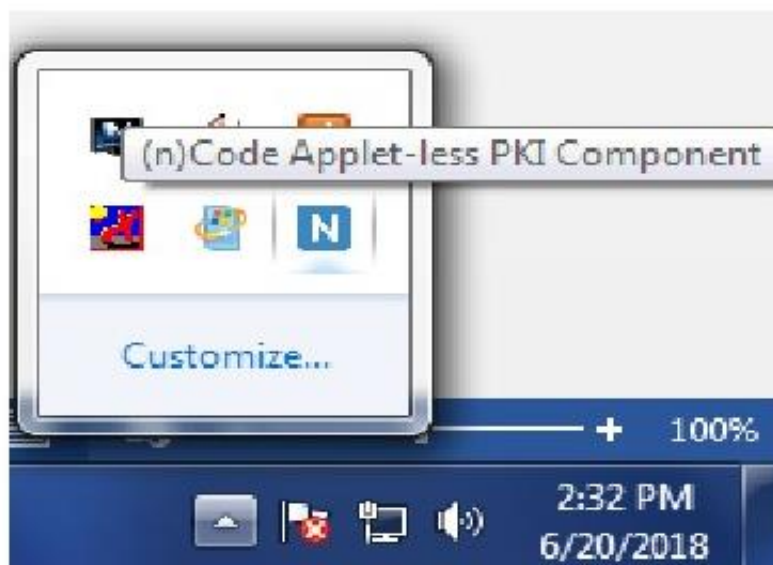


## Appletless PKI Component Help Document

- Click on finish.



After you click the finish button Applet-less pki component will run automatically and you will get icon in the system try



## Steps to uninstall / re-install

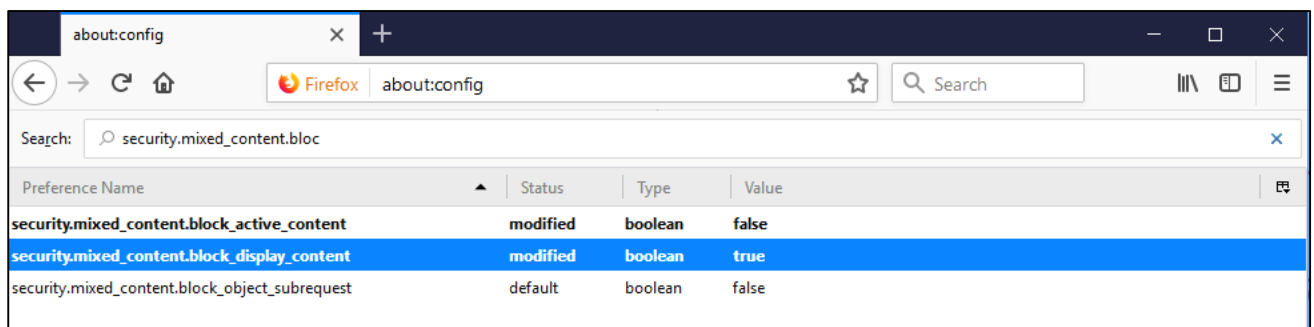
- Go to **control panel** >> **add / remove program** >> search for **nCodePKIComponent V4.0**
- Right click on **nCodePKIComponent V4.0** and
- Select **uninstall / change** which will open a wizard
- Follow wizard to uninstall **nCodePKIComponent V4.0**
- Right click on **Remove\_OLD\_Settings.bat** (which you have already downloaded with installer) and **run as administrator** to remove configuration if any remaining.
- Install **nCodePKIComponent V4.0** using setup to use it once again

## Web Browser setting

### Firefox

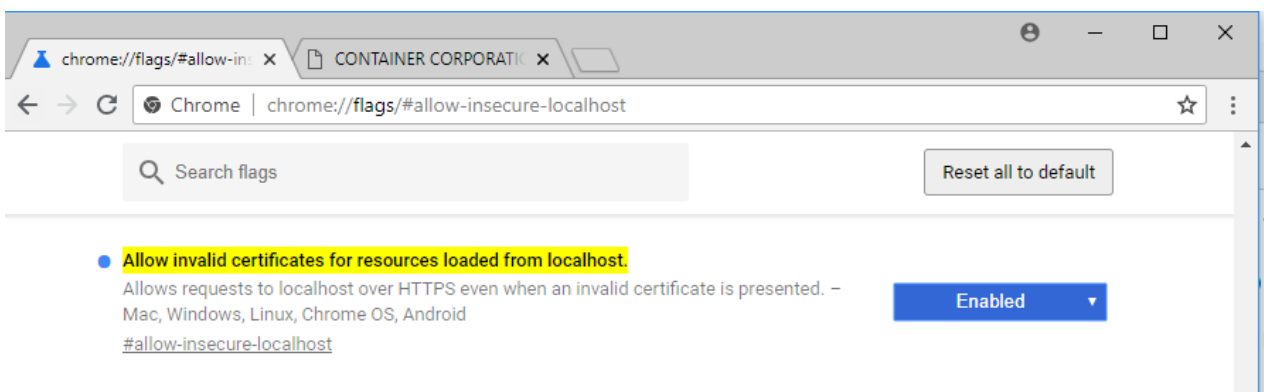
Go to URL <https://localhost:13591> and add security exception to allow connections.

- If connection error still comes, Go to URL **about:config** and set value for **security.mixed\_content.block\_active\_content** to **false** and **security.mixed\_content.block\_display\_content** to **true**.



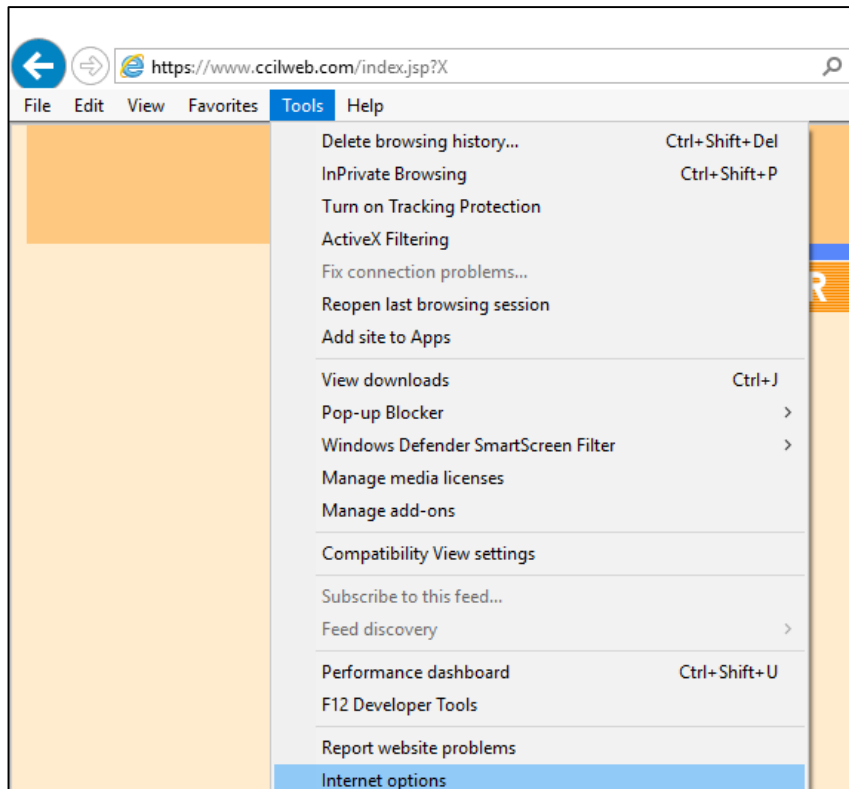
### Chrome –

Go to URL **chrome://flags/#allow-insecure-localhost** and click on **Enable** and restart Chrome to allow connections.

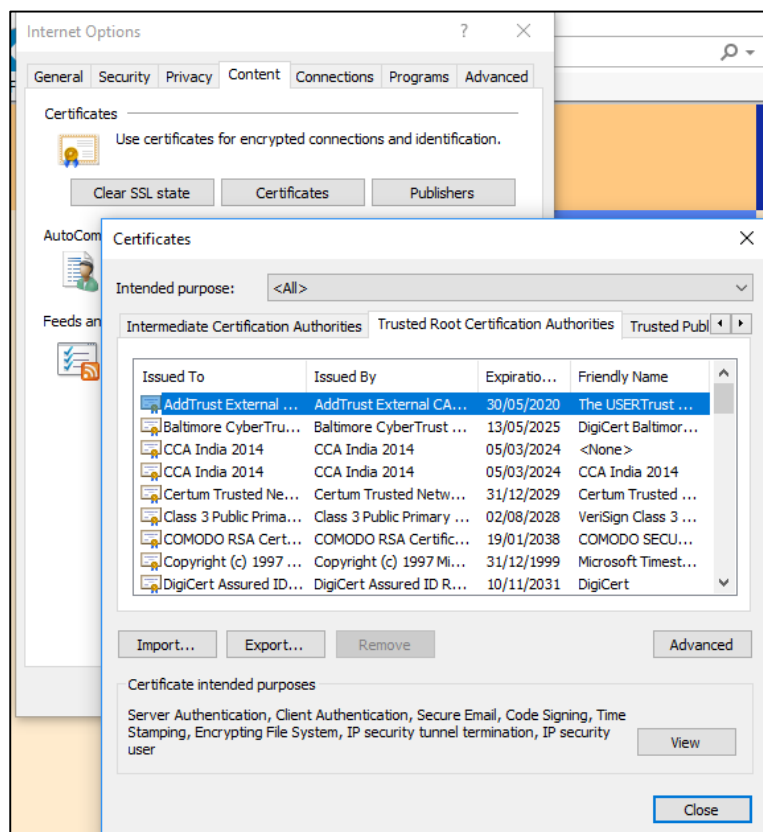


## IE 10 and above –

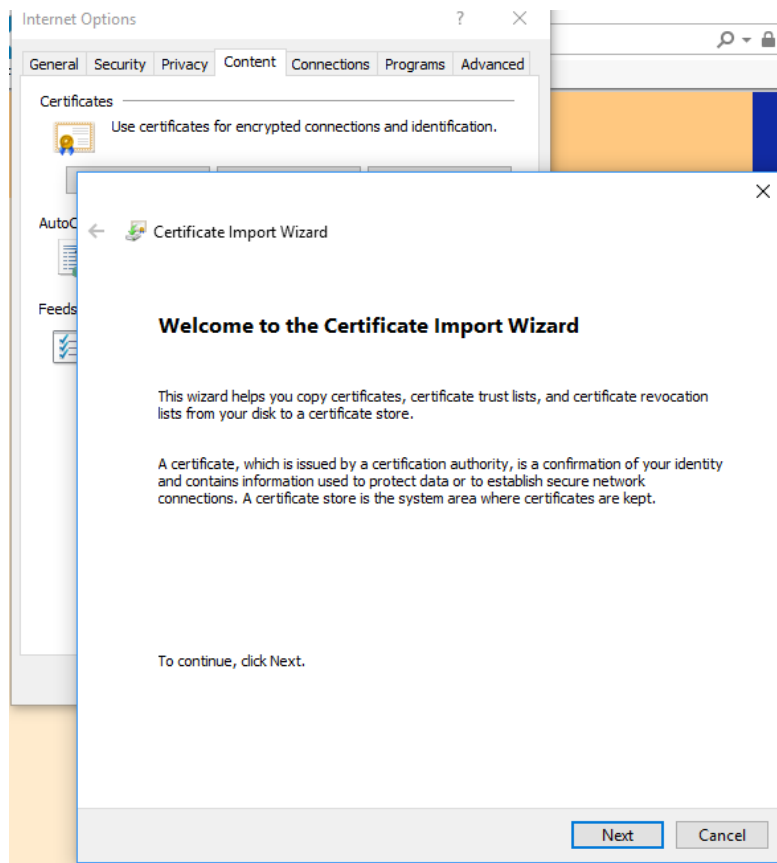
Go to URL <https://localhost:13591> and add certificate to **Trusted Root Certification Authorities** if certificate error comes.



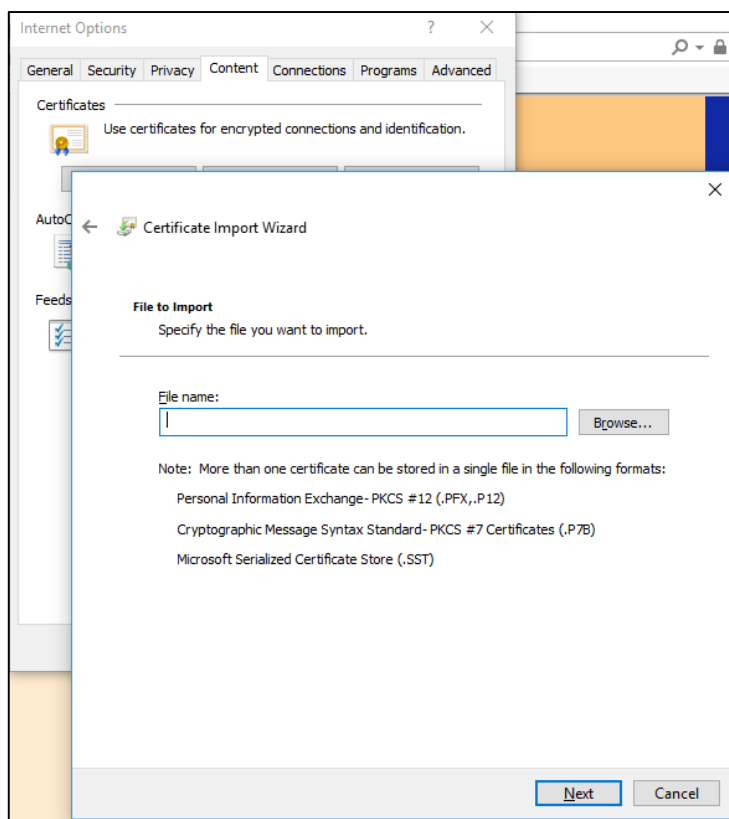
Go to Internet Options>Content tab>Certificates  
Then click Trusted Root Certification Authorities and click Import



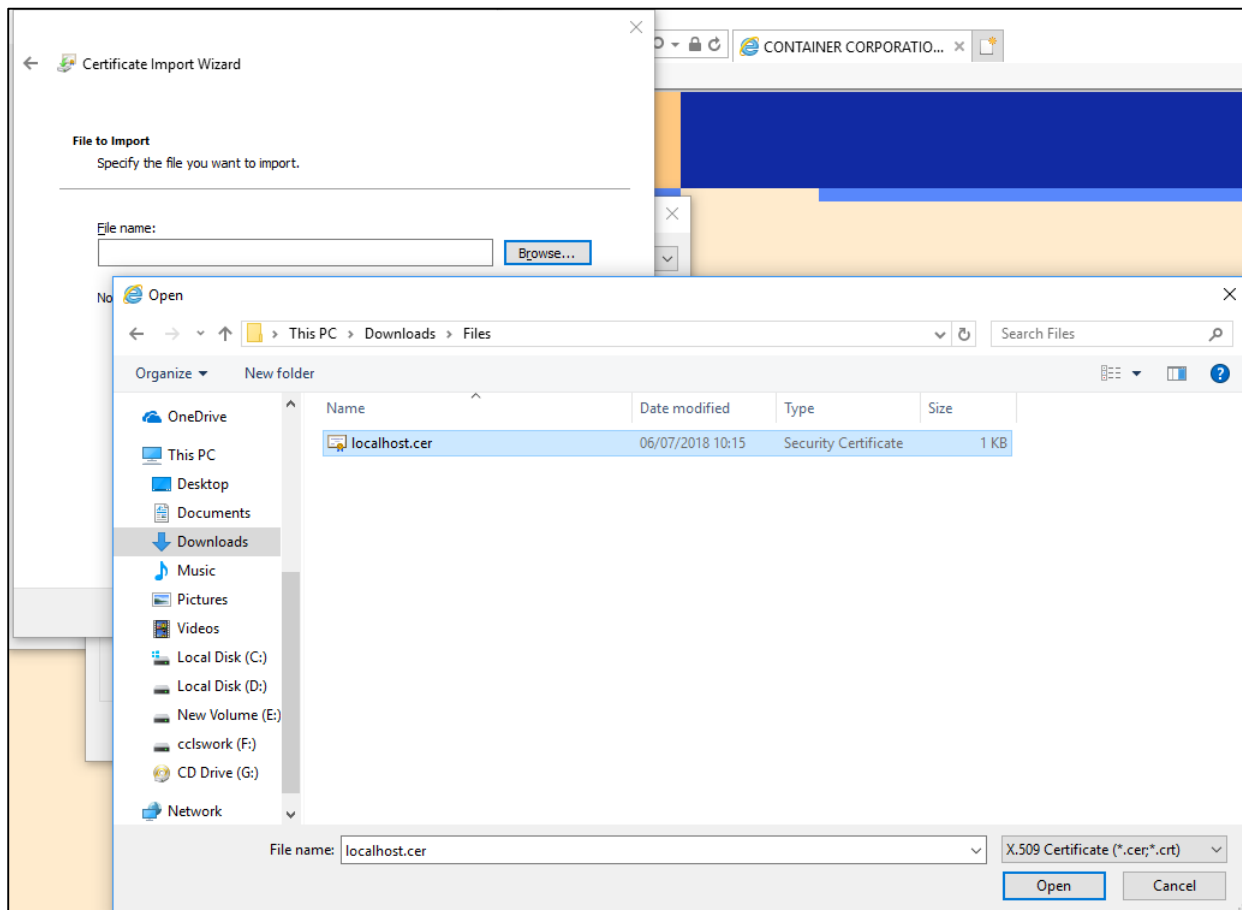
Click Next



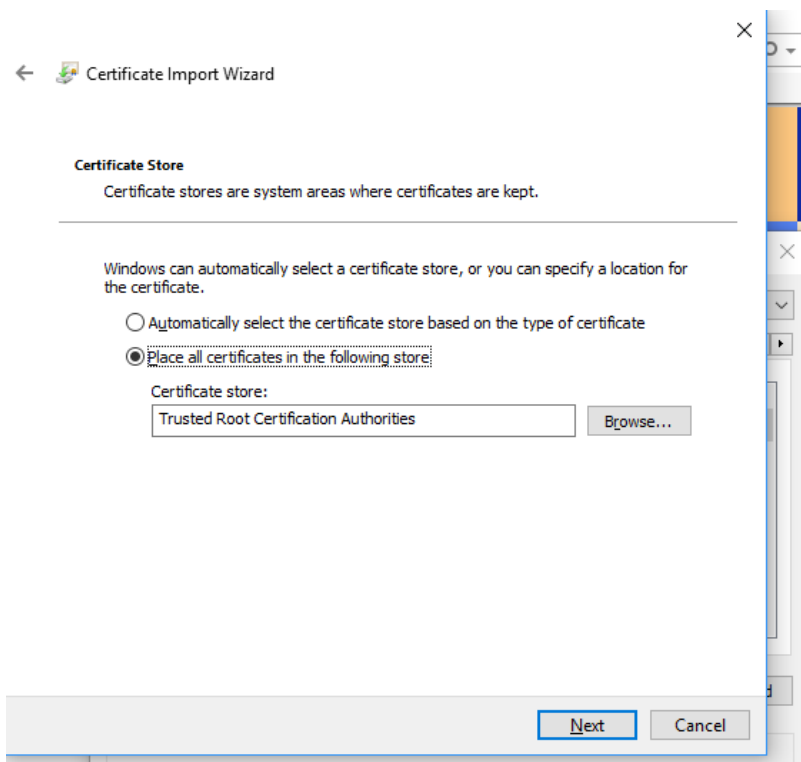
Import File “Localhost.cer” which is available at [Download](#).



Select “localhost.cer” and Click Open and click next



Click Next and Finish.



Now, please restart you PC/Computer and Login Efiling.